



Cold Chain Council

Wild Weather is the new “Normal”

June 12, 2019

Jon Davis – Chief Meteorologist

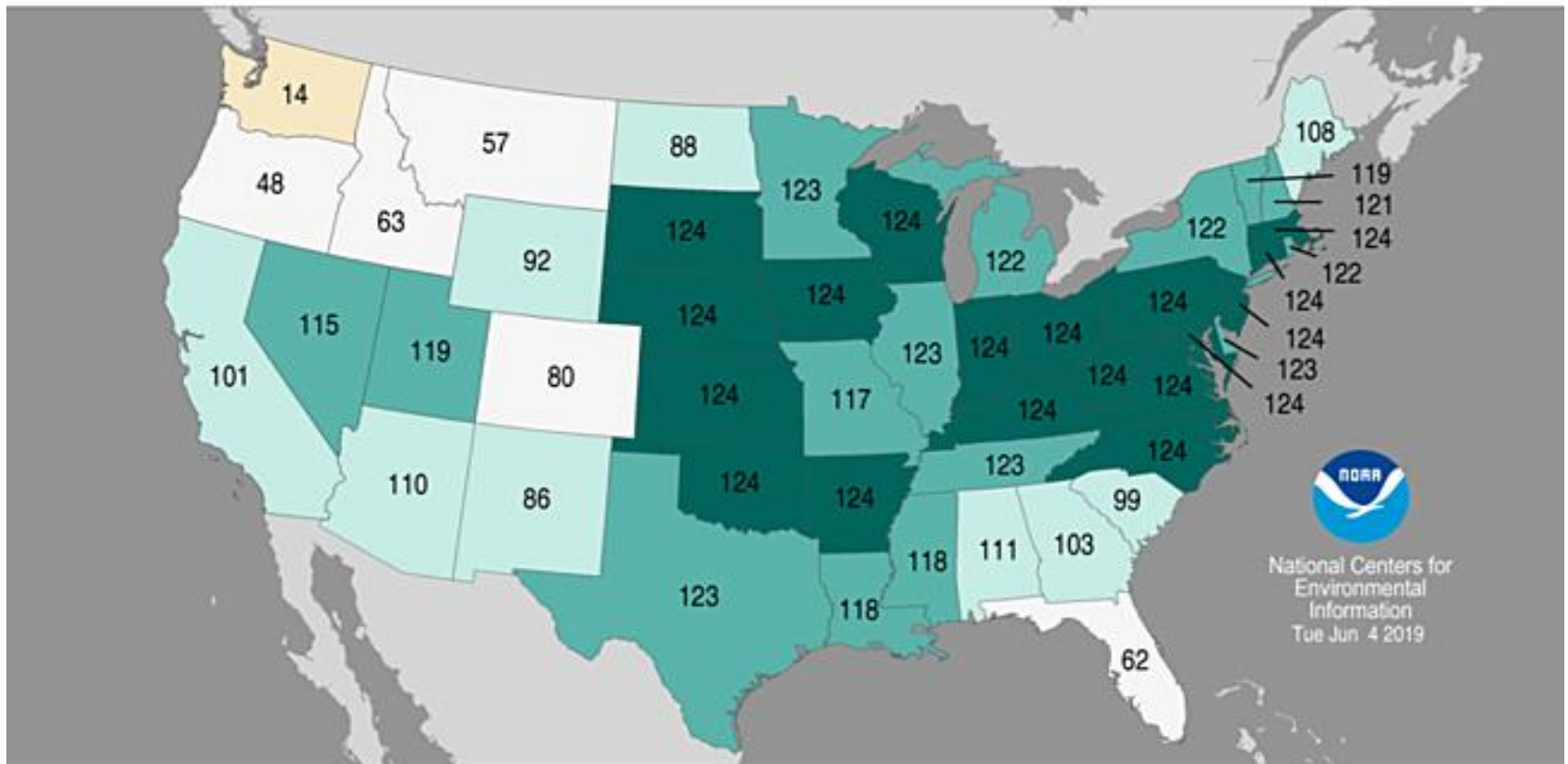
Risk Over the Past 10 Years

Top 5 Global Risks in Terms of Likelihood



■ Economic
 ■ Environmental
 ■ Geopolitical
 ■ Societal
 ■ Technological

Statewide Precipitation Ranks June 2018–May 2019 Period: 1895–2019



National Centers for
Environmental
Information
Tue Jun 4 2019

Record
Driest
(1)

Much
Below
Average

Below
Average

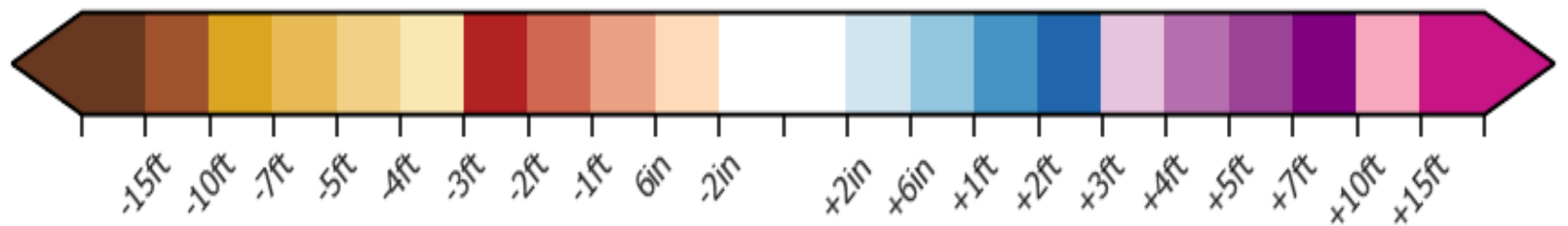
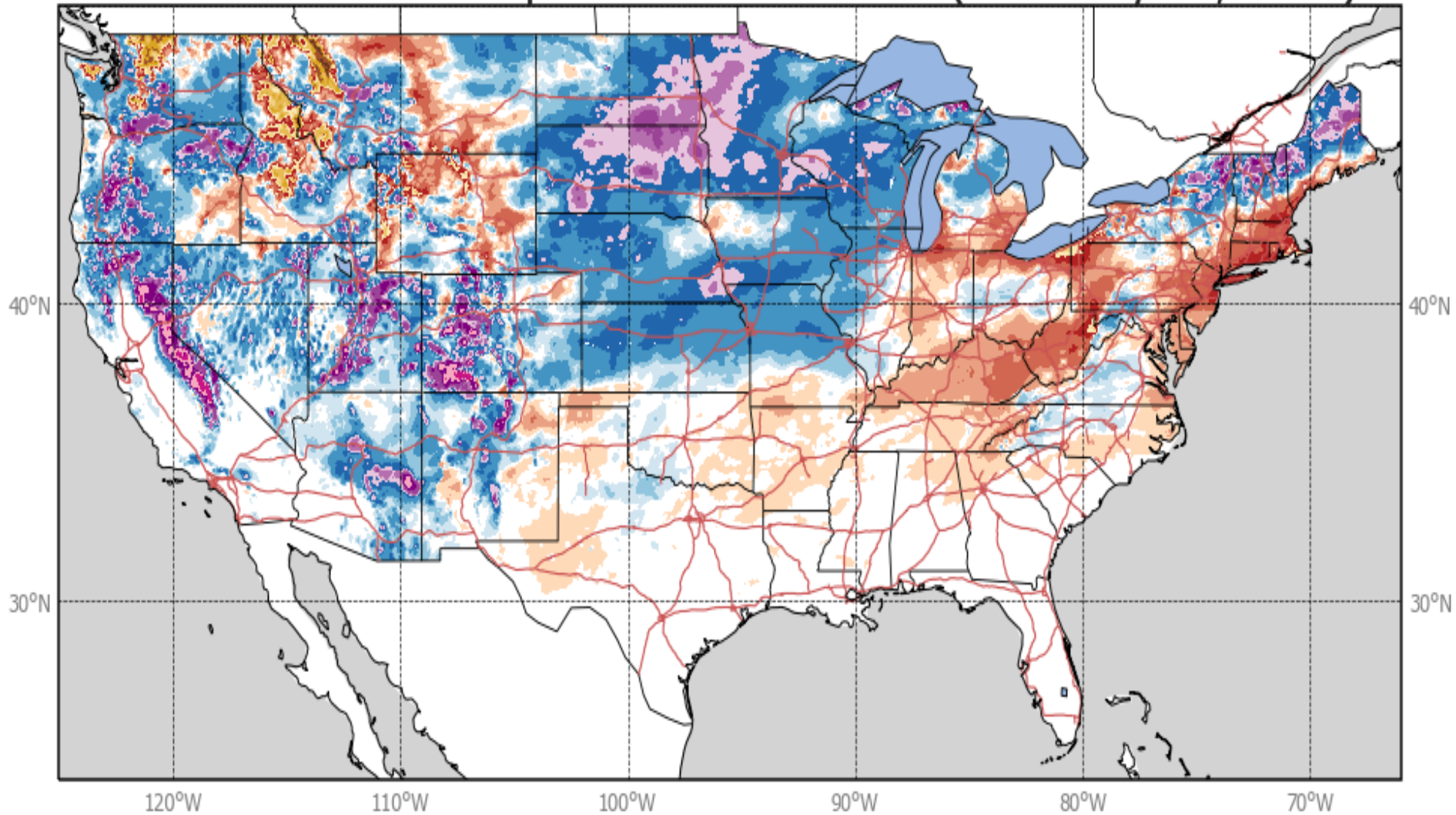
Near
Average

Above
Average

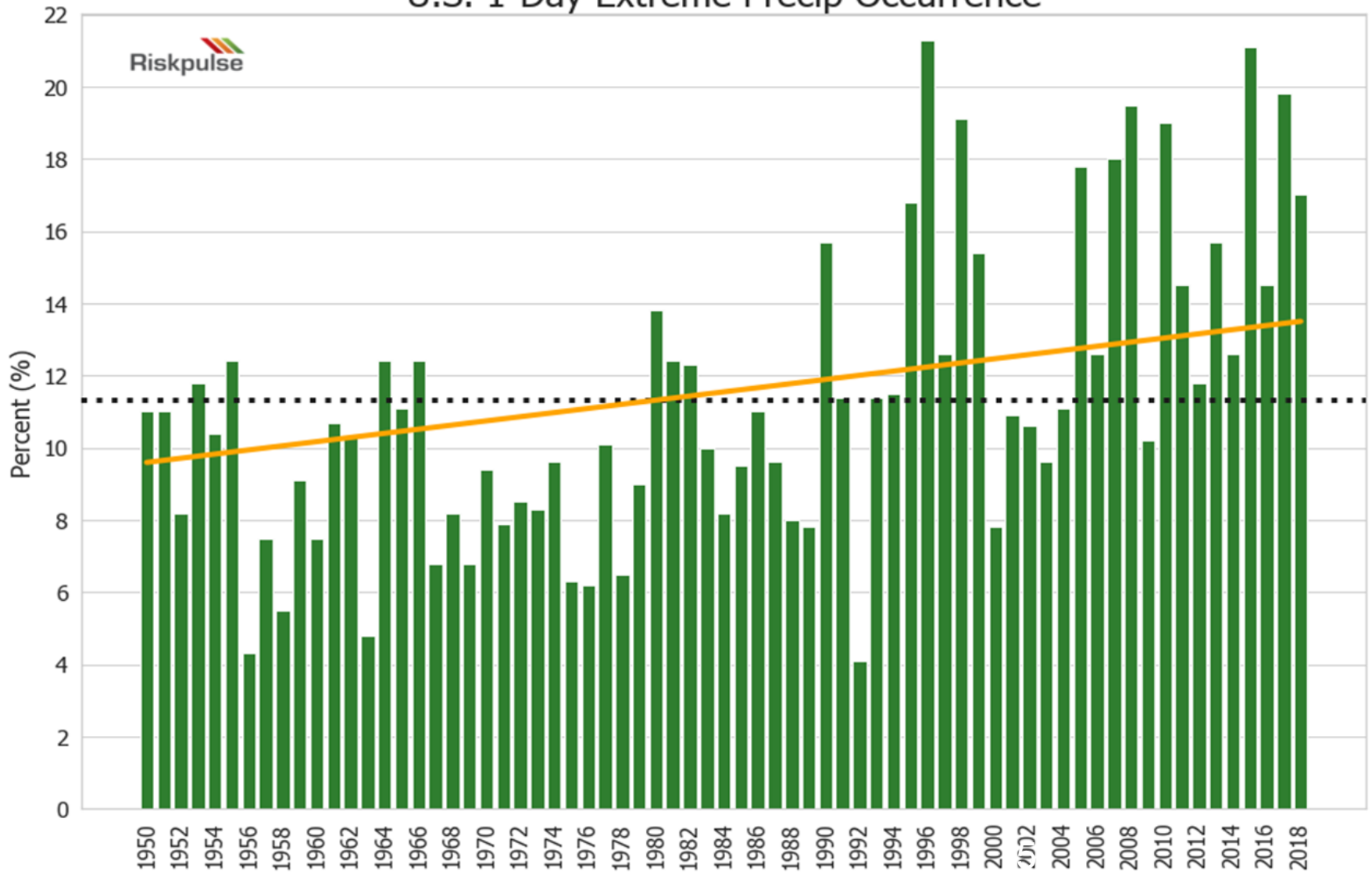
Much
Above
Average

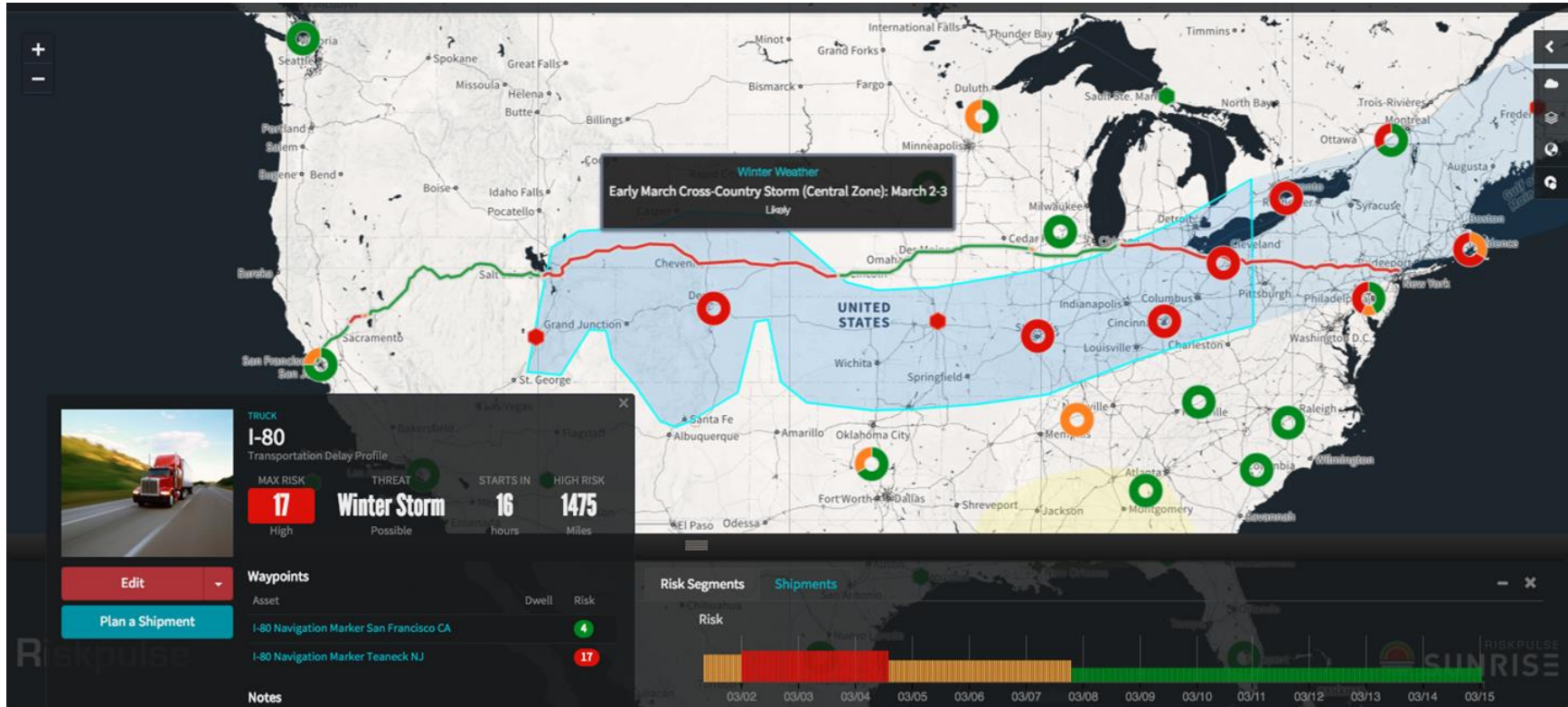
Record
Wettest
(124)

Seasonal Snowfall Departure from Normal (valid May 01, 2019)



U.S. 1-Day Extreme Precip Occurrence



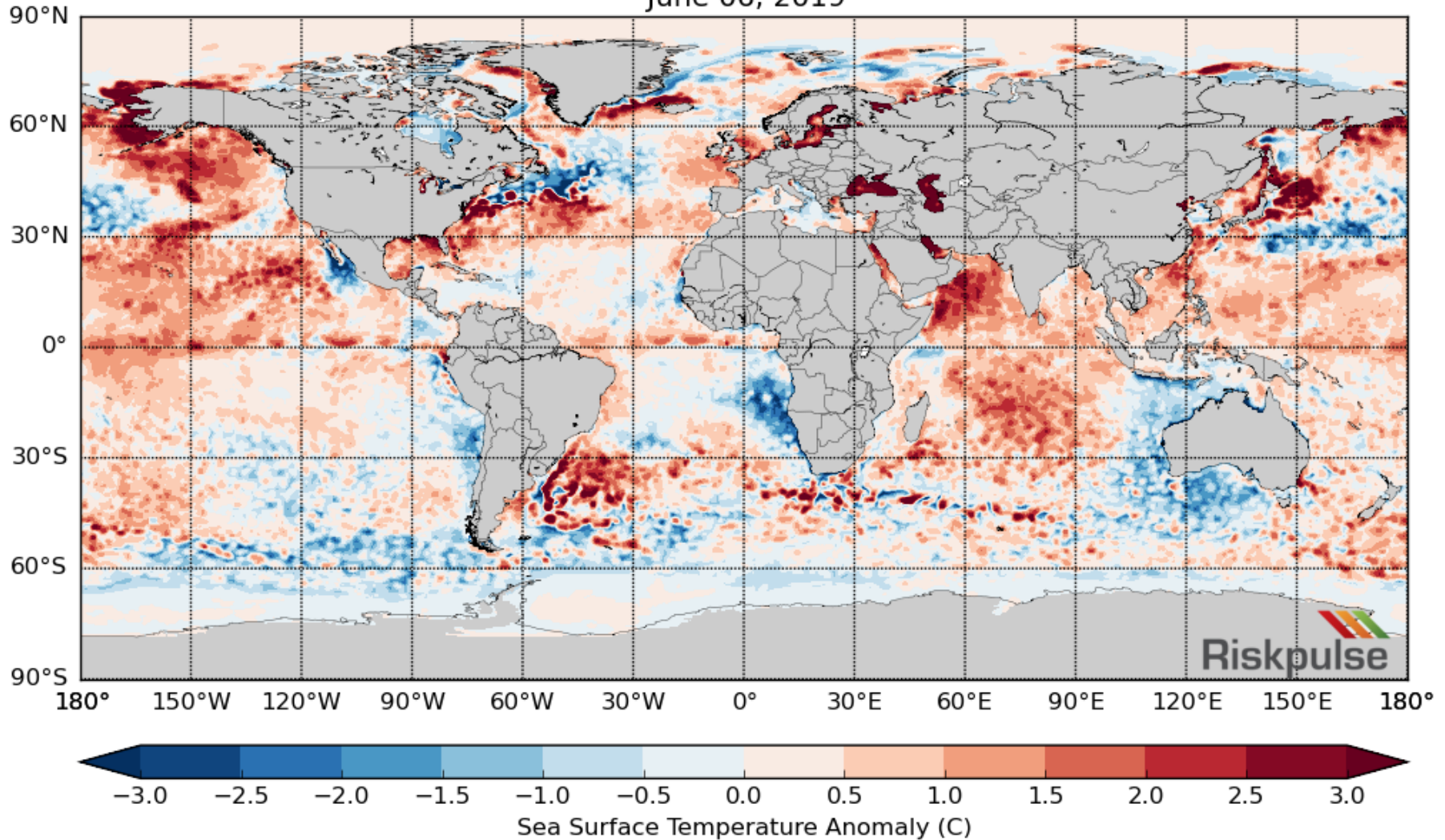


1069 Miles at High Risk
433 Miles at High Risk
408 Miles at High Risk
339 Miles at High Risk
323 Miles at High Risk

Denver, CO Kansas City, MO
St. Louis, MO Louisville, KY
Cincinnati, OH Cleveland, OH


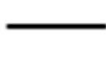
Global SSTs (Sea Surface Temperatures)

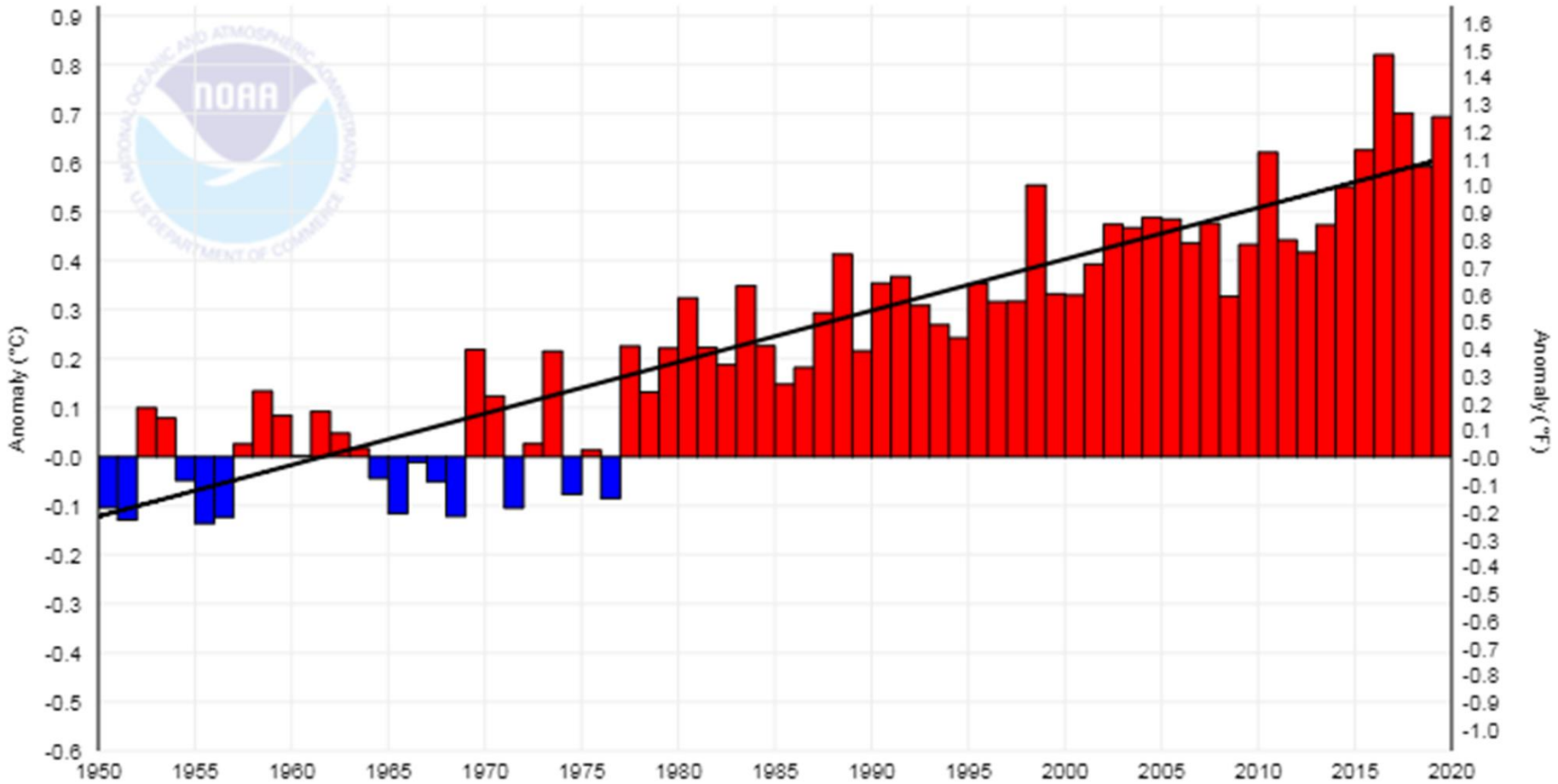
Sea Surface Temperature Anomalies (C)
June 06, 2019



Global Oceans – A Warming Trend

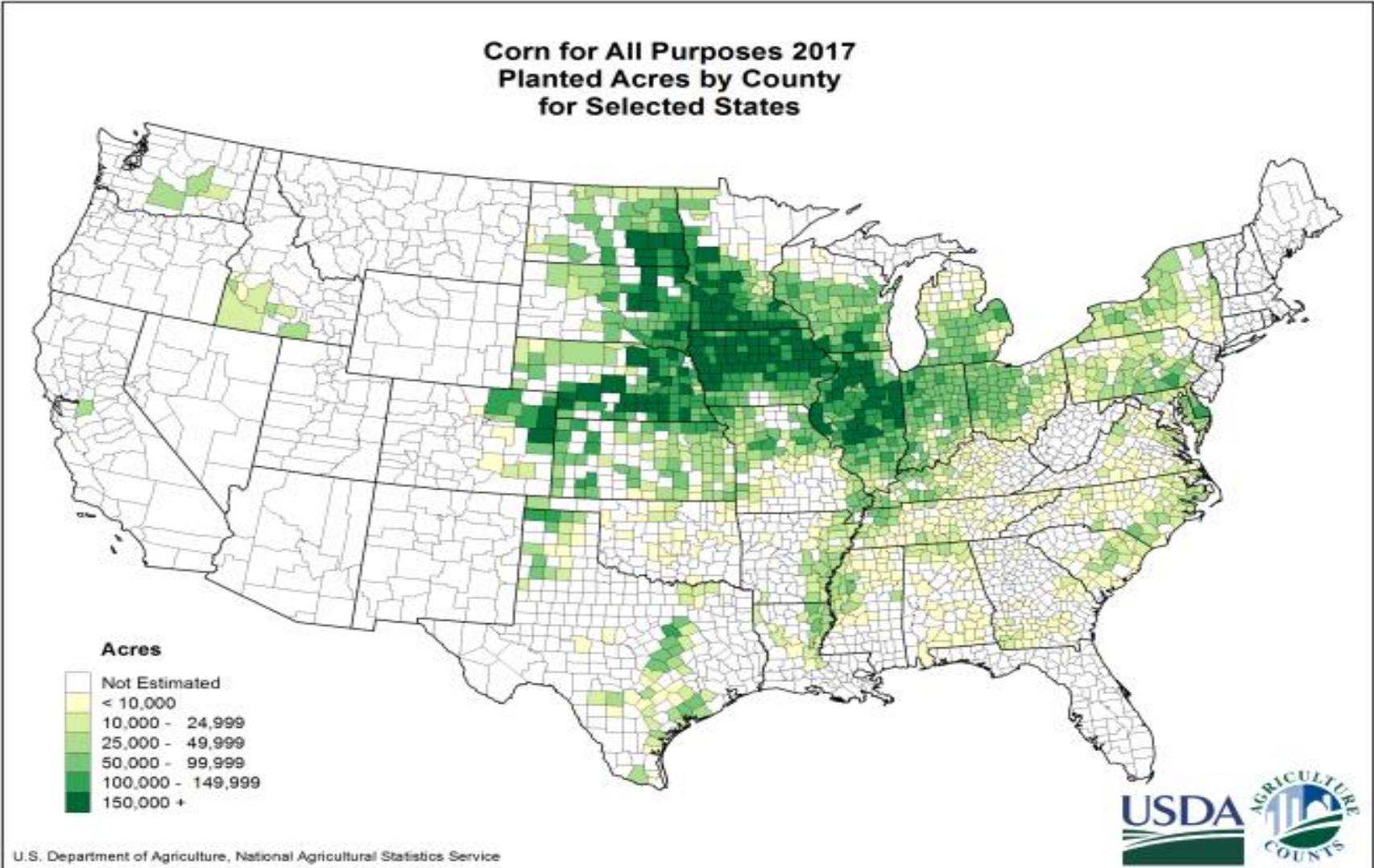
Global Ocean Temperature Anomalies, January-April

 Temperature Anomalies  1950-2019 Trend +0.10°C/Decade

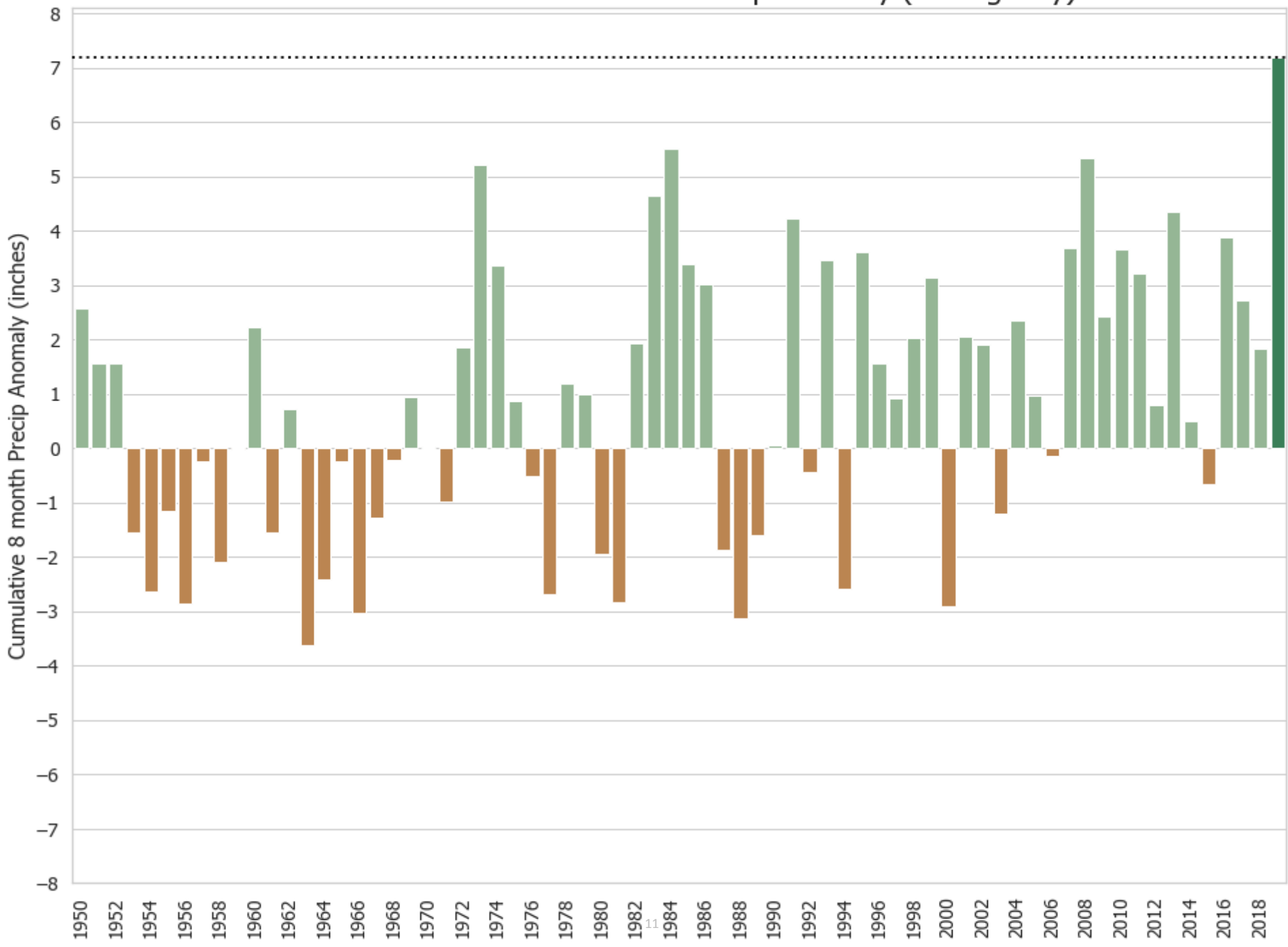


Case Study: U.S. Agriculture

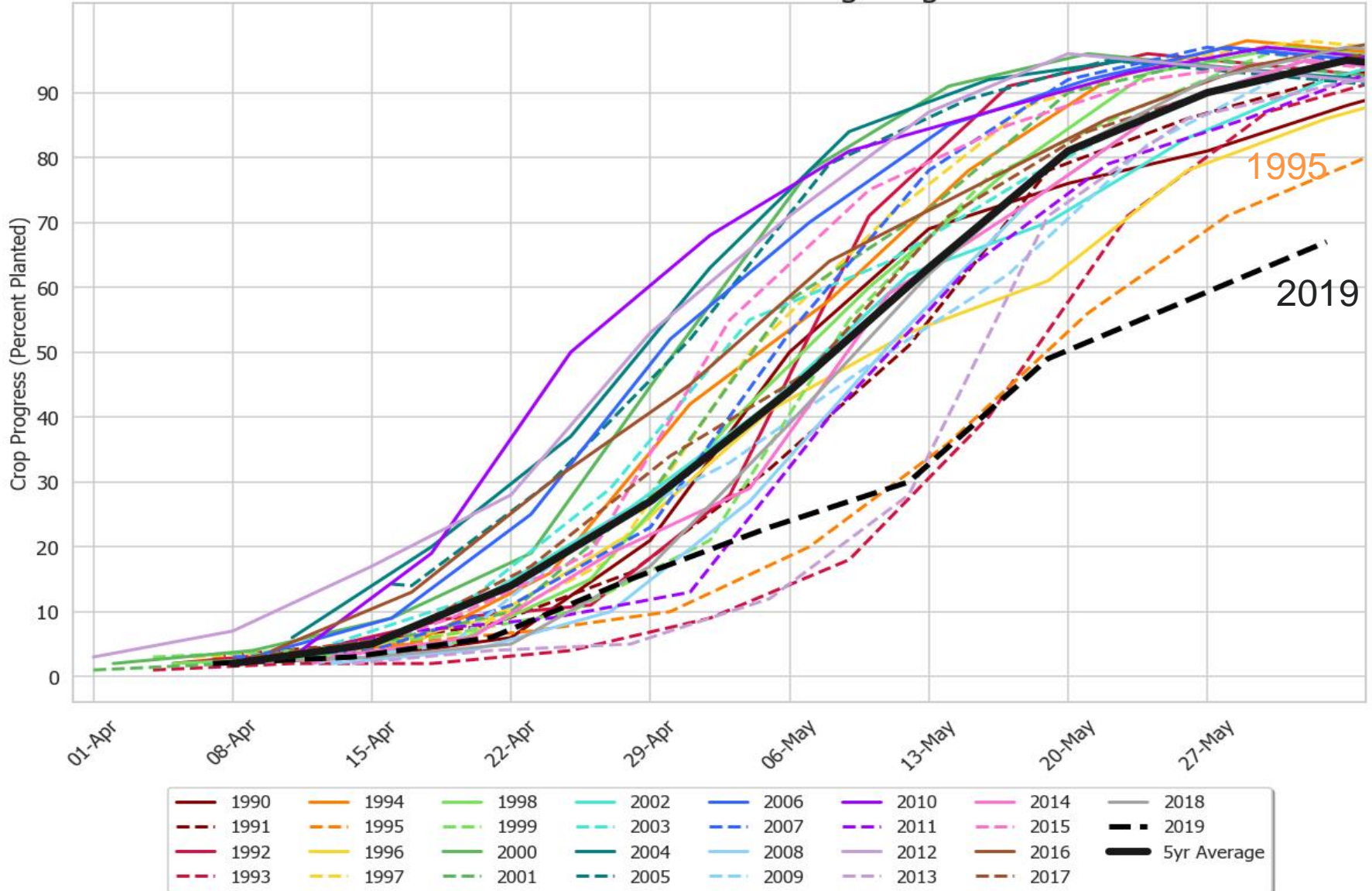




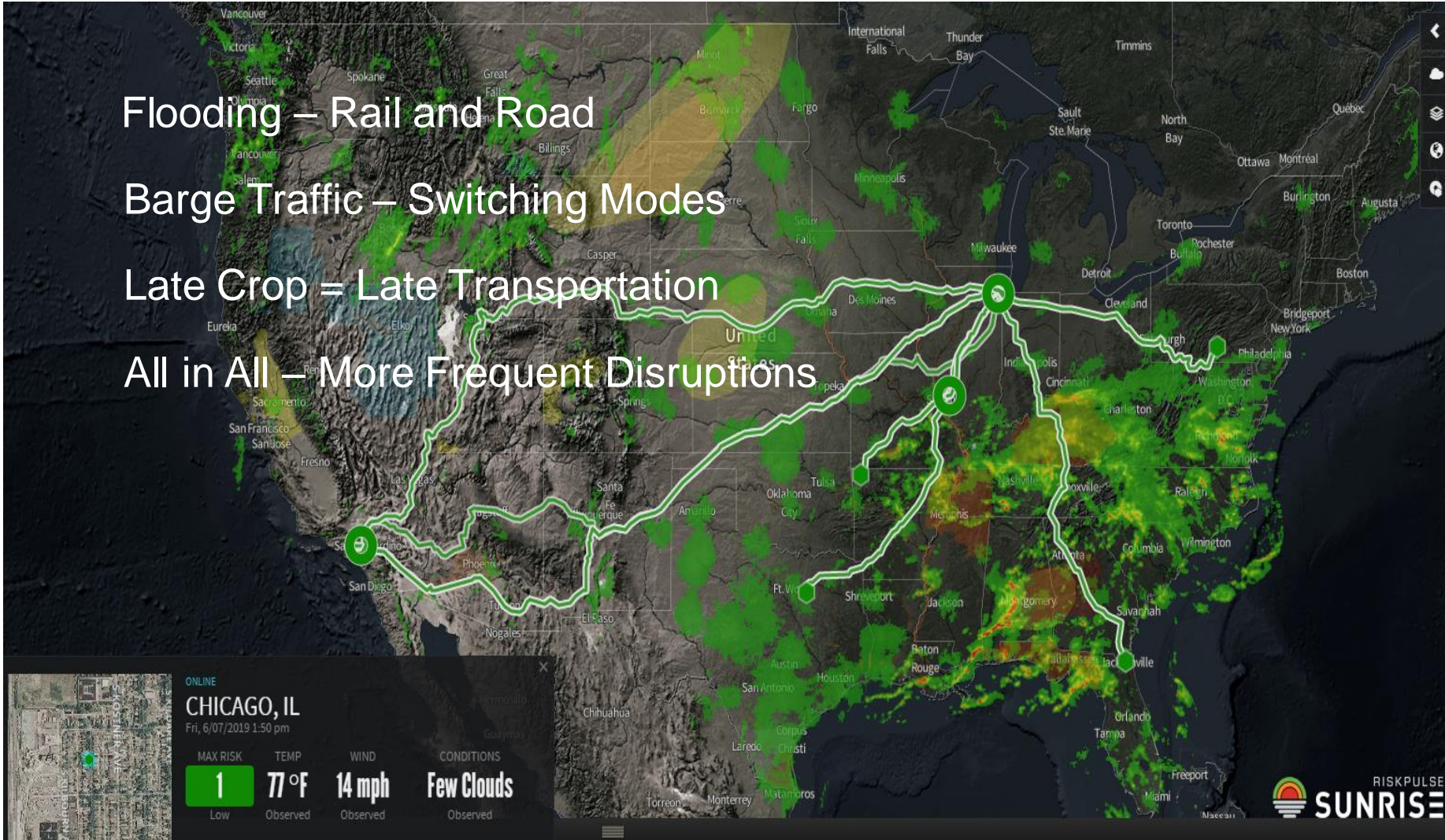
Cumulative 8 Month Corn Belt Precip Anomaly (ending May)



United States Corn Planting Progress



Flooding – Rail and Road
Barge Traffic – Switching Modes
Late Crop = Late Transportation
All in All – More Frequent Disruptions



Thanks!

Questions

United States

Riskpulse

